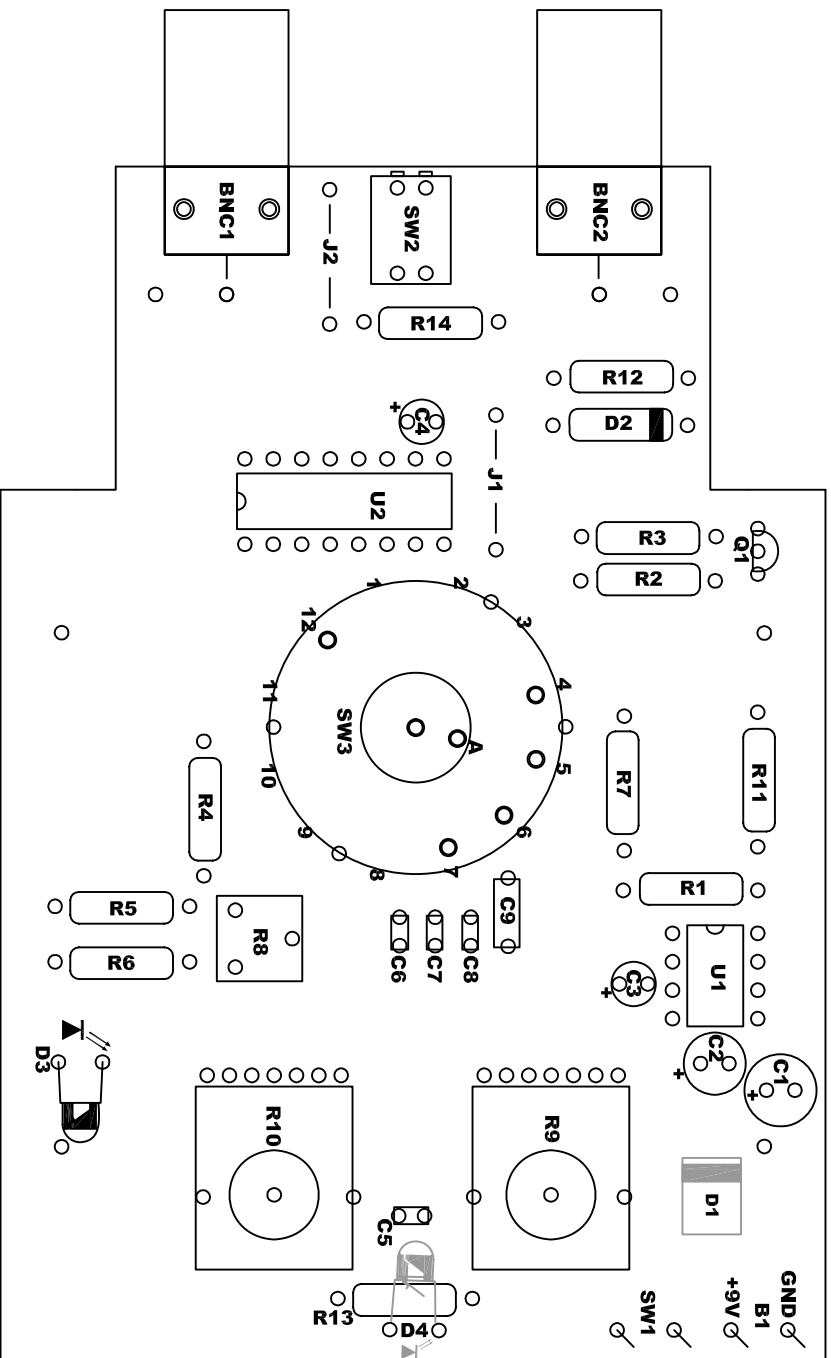


ASSEMBLY LAYOUT



COMPONENT (TOP) VIEW

NOTES:
 D1 MOUNTED UNDER PCB - SURFACE MOUNT
 D3 MOUNTED STRAIGHT UP, NOT FLUSH TO PCB
 D4 MOUNTED UNDER PCB AND BENT OVER TOWARD THE CENTRE OF THE PCB
 SW1 MOUNTED OFF BOARD
 BATTERY 'B1' MOUNTED OFF BOARD - VCC/GND
 SEE 'HAND HELD FUNCTION GENERATOR KIT PARTS LIST' FOR PART DETAILS

NIAGARA COLLEGE
 WORKSHOP PROJECT
 (PCB - REV 6)